



# Parts Catalog

## TROY-BILT® Chipper/Vac Plus

*1-800  
251 8007*

### Models

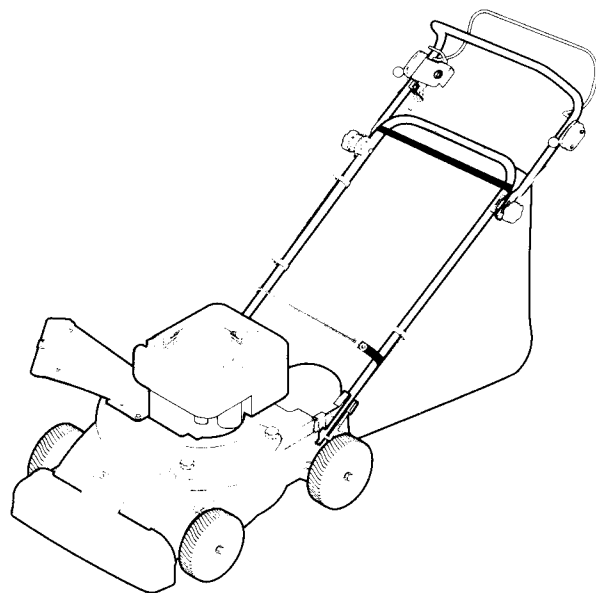
---

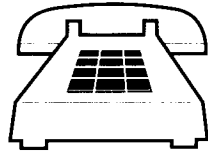
47291

Serial Numbers  
472910100001 - 472910199999

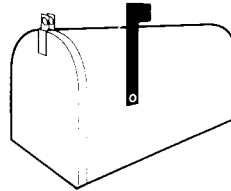
47292

Serial Numbers  
472920100001 - 472920199999





**HOW TO  
REACH  
US**



Address	Hours	Toll-Free Telephone Numbers
<p><b>In the U.S.A:</b></p> <p>Garden Way Incorporated 102nd Street &amp; 9th Avenue Troy, New York 12180</p>	<p>Mon.-Fri.: 8 a.m. to 7:00 p.m. Sat. 9 a.m. to 4 p.m.</p>	<p>For Parts Sales: 1-800-648-6776 For Technical Service: 1-800-520-5520</p>
<p><b>In Canada:</b></p> <p>Garden Way Incorporated 320 Van Sickle Road, Unit 12 St. Catharines, Ontario L2R 6P7</p>	<p>Mon.-Fri.: 8 a.m. to 5:00 p.m.</p>	<p>For Parts Sales or Technical Service: 1-800-225-3585</p>



**CAUTION**

We urge that you use only genuine TROY-BILT Chipper/Vac replacement parts, which meet all of the latest requirements. Replacement parts manufactured by others could present safety hazards even though they may fit on this product.

## PARTS ORDERING INFORMATION

Parts for your machine may be ordered from your local servicing dealer or directly from the factory (see factory address and phone numbers on page at left). Please remember that we, or your local dealer will need to know the identification numbers of your machine to give you the most efficient service. Please see below for how to identify and record the identification numbers for your machine.

**When ordering parts, please be sure to provide the following information:**

1. The SERIAL NUMBER and MODEL NUMBER of your machine.
2. The PART NUMBER of the part.
3. The PART DESCRIPTION.
4. The QUANTITY needed.

**If you need engine service or parts:**

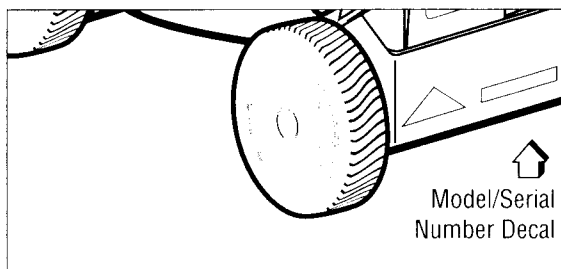
For engine service or parts, please contact your local authorized engine dealer. Look in the Yellow Pages of your phone book under "Engines-Gasoline" for the name of your nearest authorized engine dealer. An authorized dealer can handle all parts, repairs, and warranty service concerning the engine. NOTE: Some parts on your engine are exclusive to this machine and may not be available from the engine dealer. Refer to the engine drawings in this Parts Catalog to identify and order these exclusive parts.

### IDENTIFICATION NUMBERS

Please write the Model and Serial numbers of your machine in the spaces provided below. A decal listing these numbers is located on the rear of the machine's housing (see figure below).

**Model Number:** \_\_\_\_\_

**Serial Number:** \_\_\_\_\_



All references to left, right, front and rear of the machine are determined by standing behind the handlebars and facing the direction of forward travel.

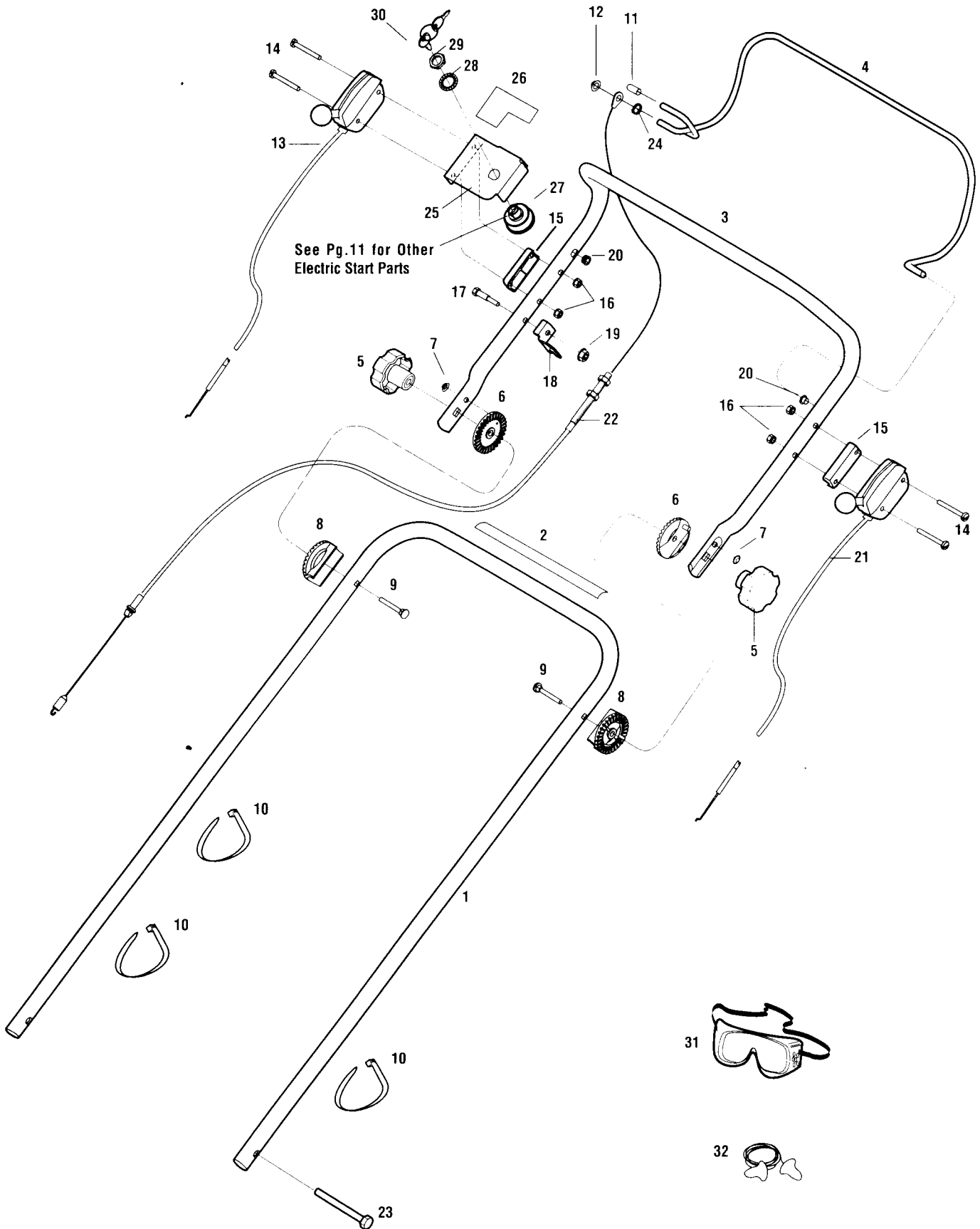
### IMPORTANT:

Some replacement parts that you receive may vary slightly in shape, color, or texture from the original parts. This is because certain parts are supplied to us by more than one manufacturer. Please be assured, however, that all parts must conform to our rigid quality specifications, and any slight variations will not affect the fit or performance of these parts.

# TROY-BILT CHIPPER/VAC PLUS

# Models 47291 and 47292

Serial Numbers: 472910100001 - 472910199999  
472920100001 - 472920199999



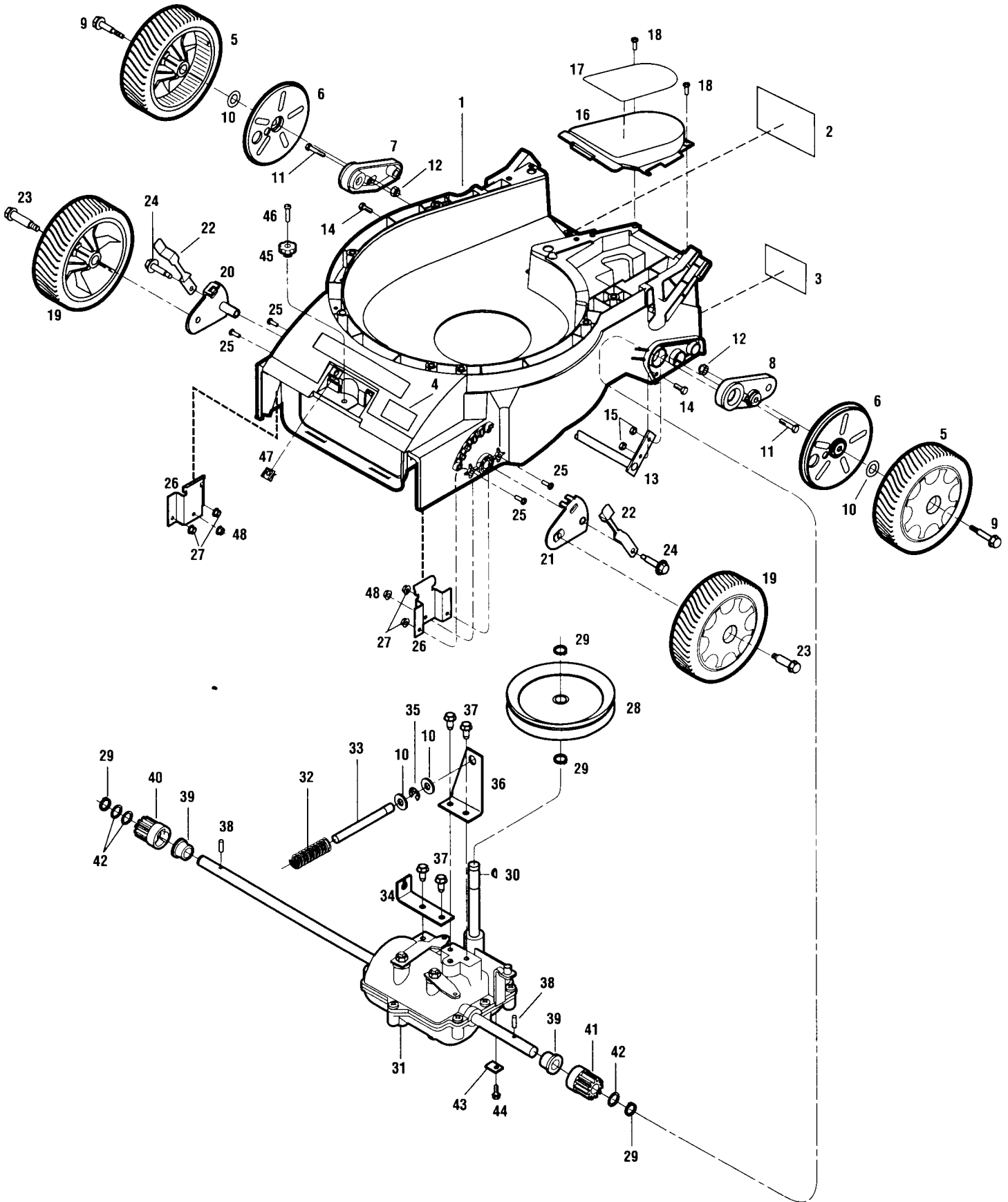
REF No.	PART No.	DESCRIPTION	QTY.	REF No.	PART No.	DESCRIPTION	QTY.
1	1903346	Lower Handlebar. Incl. Ref. No. 2	1	19	9844	Flange Lock Nut, 1/4-20	1
2	1902658	Decal, Wheel Drive Engage	1	20	1908677	Plastic Bushing	2
3	1909127001	Upper Handlebar	1	21	1909310	Ground Speed Lever/Cable Assembly	1
4	1909134001	Wheel Drive Bail Assembly	1	22	1903358	Wheel Drive Cable Assembly Incl. Ref No. 10 and 12	1
5	1903480	Handle Knob	2	23	1909470	Fillister Hd. Screw, 5/16-18 x 2	2
6	1903404	Handle Adjust. Quadrant (outer)	2	24	1908673	Ring, Grip - .312	1
7	1765879	Retainer, 1/4	2	25	1903347	Bracket, Keyswitch. Incl. Ref. No. 26. See (A)	1
8	1903403	Handle Adjust. Quadrant (inner)	2	26	1902784	Decal, Ignition Switch. See (A)	1
9	1767448	Carriage Screw, 5/16-18 x 2	2	27	1900455	Key Switch. Incl. Ref. Nos. 28, 29 & 30. See (A)	1
10	1763682	Plastic Cable Tie	3	28	94021	Lockwasher, Int. Tooth, 5/8. See (A)	1
11	1908678	Plastic Cap	1	29	92018	Hex Nut, 5/8-32. See (A)	1
12	1908679	Push-on Cap, .312	1	30	96520	Ignition Key. See (A)	2
13	1909309	Throttle Lever/Cable Assembly	1	31	5003	Safety Goggles - Soft Sided	1
14	1908793	Panhead Screw, #10-24 x 2	4	32	1908685	Ear Plugs	1
15	1909291	Spacer, Cable Assembly	2				
16	9828	Hex Locknut, #10-24	4				
17	9664	Hex Hd. Screw, 1/4-20 x 1-1/2	1				
18	1909229001	Cable Bracket	1				

(A) – Model 47292

# TROY-BILT CHIPPER/VAC PLUS

# Models 47291 and 47292

Serial Numbers: 472910100001 - 472910199999  
472920100001 - 472920199999



REF No.	PART No.	DESCRIPTION	QTY.
1	---	Housing. For installation only by authorized TROY-BILT service dealer. ....	1
2	1902749	Decal - Danger: Rotating Blades & Thrown Objects .....	1
3	1902751	Decal - Caution: Pinch Points.....	1
4	1902748	Decal - Danger: Rotating Blades .....	1
5	1765750	Tire and Wheel Assembly (Rear).....	2
6	1909159	Wheel Shield .....	2
7	1909154	Wheel Support - Right Hand .....	1
8	1909155	Wheel Support - Left Hand .....	1
9	1903416	Shoulder Screw, 3/8-16 x 2.31 .....	2
10	9904	Washer, .812 x .406 x .080 .....	2
11	90006	Hex Hd. Screw, 1/4-20 x 1-1/2.....	2
12	1733398	Hex Locknut, 3/8-16 .....	2
13	1909390001	Brace Assembly .....	1
14	90070	Hex Hd. Screw, 1/4-20 x 3/4 .....	2
15	9811	Hex Locknut, 1/4-20 .....	4
16	1903340	Belt Cover. Incl. Ref. No. 17 .....	1
17	1902744	Decal - Caution: Safety Rules.....	1
18	1909359	Phillips Screw, 1/4-20 x 1/2.....	2
19	1765740	Tire and Wheel Assembly (Front).....	2
20	1909569001	Wheel Plate - Right Hand .....	1
21	1909568001	Wheel Plate - Left Hand .....	1
22	1909039001	Wheel Adjust Lever .....	2
23	1909099	Shoulder Screw .....	2
24	1909280	Shoulder Screw .....	2
25	1909360	Phillips Screw, 1/4-20 x 3/4 .....	4

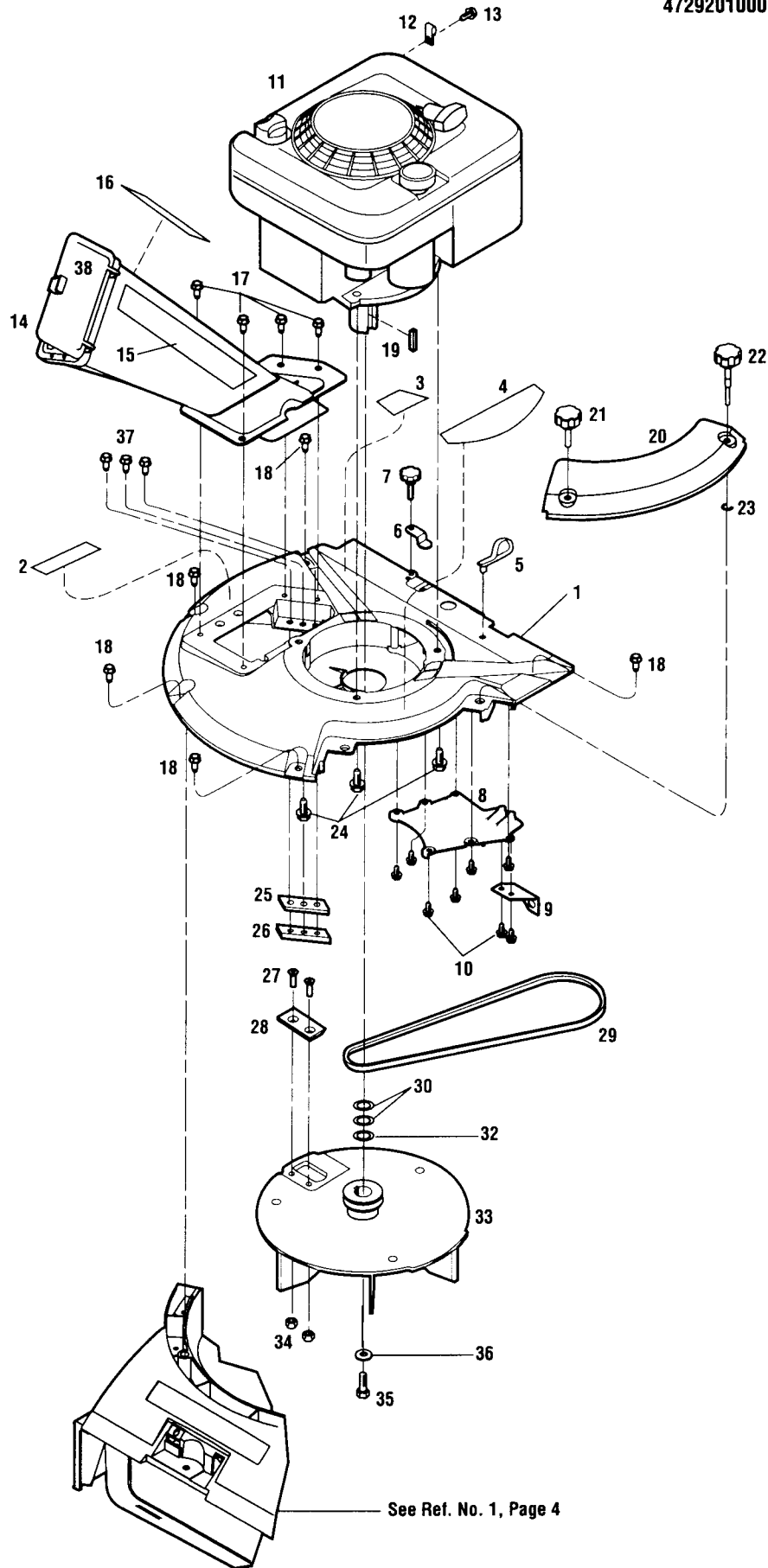
REF No.	PART No.	DESCRIPTION	QTY.
26	1909040001	Plate - Front .....	2
27	9844	Flange Locknut, 1/4-20 .....	4
28	1908936	Wheel Drive Pulley .....	1
29	97013	Retaining Ring - External .....	4
30	1908671	Woodruff Key .....	1
31	1909171	Transmission Assembly .....	1
32	1909307	Compression Spring .....	1
33	1909204	Belt Tensioner Rod .....	1
34	1909158001	Cable Bracket .....	1
35	1909306	Retaining Ring .....	1
36	1909160001	Tension Bracket.....	1
37	1909301	Taptite Screw, 1/4-20 .....	4
38	1909044	Wheel Drive Pin .....	2
39	1764816	Axle Bearing .....	2
40	1908939	Pinion Gear - Right Hand .....	1
41	1909043	Pinion Gear - Left Hand.....	1
42	1909382	Shim, .06 .....	*
	1909381	Shim, .03 .....	*
	1909380	Shim, .015 .....	*
43	1909293001	Cable Clamp .....	1
44	1767754	Screw/Washer, #10-24, Self-Thread ..	1
45	1909261	Knob - Safety Cover Housing .....	1
46	1909417	Phil. Hd. Screw, 1/4-20 x 1-3/4.....	1
47	1909256	Clip - 1/4 Turn Fastener.....	1
48	92016	Hex Locknut, Nylon, 5/16-18 .....	2

\* Use in various combinations as required.

# TROY-BILT CHIPPER/VAC PLUS

# Models 47291 and 47292

Serial Numbers: 472910100001 - 472910199999  
472920100001 - 472920199999





REF No.	PART No.	DESCRIPTION	QTY.	REF No.	PART No.	DESCRIPTION	QTY.
1	1903345	Engine Deck. Incl. Ref. Nos. 2, 3, 4 and 5 .....	1	20	1903342	Screen Access Cover. Incl. Ref. Nos. 22 and 23 .....	1
2	1902752	Decal - Danger: Rotating Blades .....	1	21	1909358	Knob - Access Cover .....	1
3	1902750	Decal - Warning: Hot Surface/Fire....	1	22	1909349	Studded Knob - Access Cover .....	1
4	1902747	Decal - Danger: Rotating Blades .....	1	23	1909361	Retaining Ring - External .....	1
5	1909413	Hanger - Wire Harness .....	1	24	1909320	Taptite Screw, 3/8-16 .....	3
6	1909418001	Bracket - Pin .....	1	25	1909378	Spacer - Anvil .....	1
7	1909423	Knob - Pin Holder .....	1	26	1909377	Anvil .....	1
8	1909066	Belt Shield .....	1	27	9592	Screw, Flat Hd. Socket, 1/4-20 x 1 ...	2
9	1909202	Bracket - Tension .....	1	28	1903339	Chipper Blade Kit. Incl. Blade and two ea. Ref. Nos. 27 & 34 .....	1
10	1909301	Taptite Screw, 1/4-20 .....	8	29	1903348	Drive Belt .....	1
11	**	Engine - 5HP Briggs & Stratton, Electric Start. ....	1	30	1908669	Shim - .020 x .980 O.D. ....	*
	**	Engine - 5HP Briggs & Stratton, Recoil Start. ....	1	31		(This Ref. No. not used)	
12	1754159	Cable Clamp .....	1	32	1908724	Shim - Hardened .....	*
13	**	Hex Hd. Screw. ....	1	33	1903341	Balanced Rotor Assembly. Incl. one ea. Ref. Nos. 19, 31, 35 & 36; and two ea. Ref. Nos. 30 & 32	1
14	1903525	Chute Assembly. Incl. Ref. Nos. 15, 16 and 38 .....	1	34	1908125	Nut - Hex Nylock, 1/4-20 .....	2
15	1902862	Decal - Stripe .....	1	35	90025	Hex Hd. Screw, 3/8-24 x 1 1/4, Grade 8 .....	1
16	1902745	Decal - Danger: Rotating Blades .....	1	36	9925	Lockwasher, Conical, .413 .....	1
17	1909304	Taptite Screw, 5/16-18 .....	4	37	90044	Screw, Hex Flange Lock, 5/16-18 x 3/4 .....	3
18	90038	Screw, Hex Flange Lock, 5/16-18 x 5/8 .....	4	38	1909087	Chute Cover .....	1
19	9326	Key - 1/4 sq. x 1 1/4 .....	1				

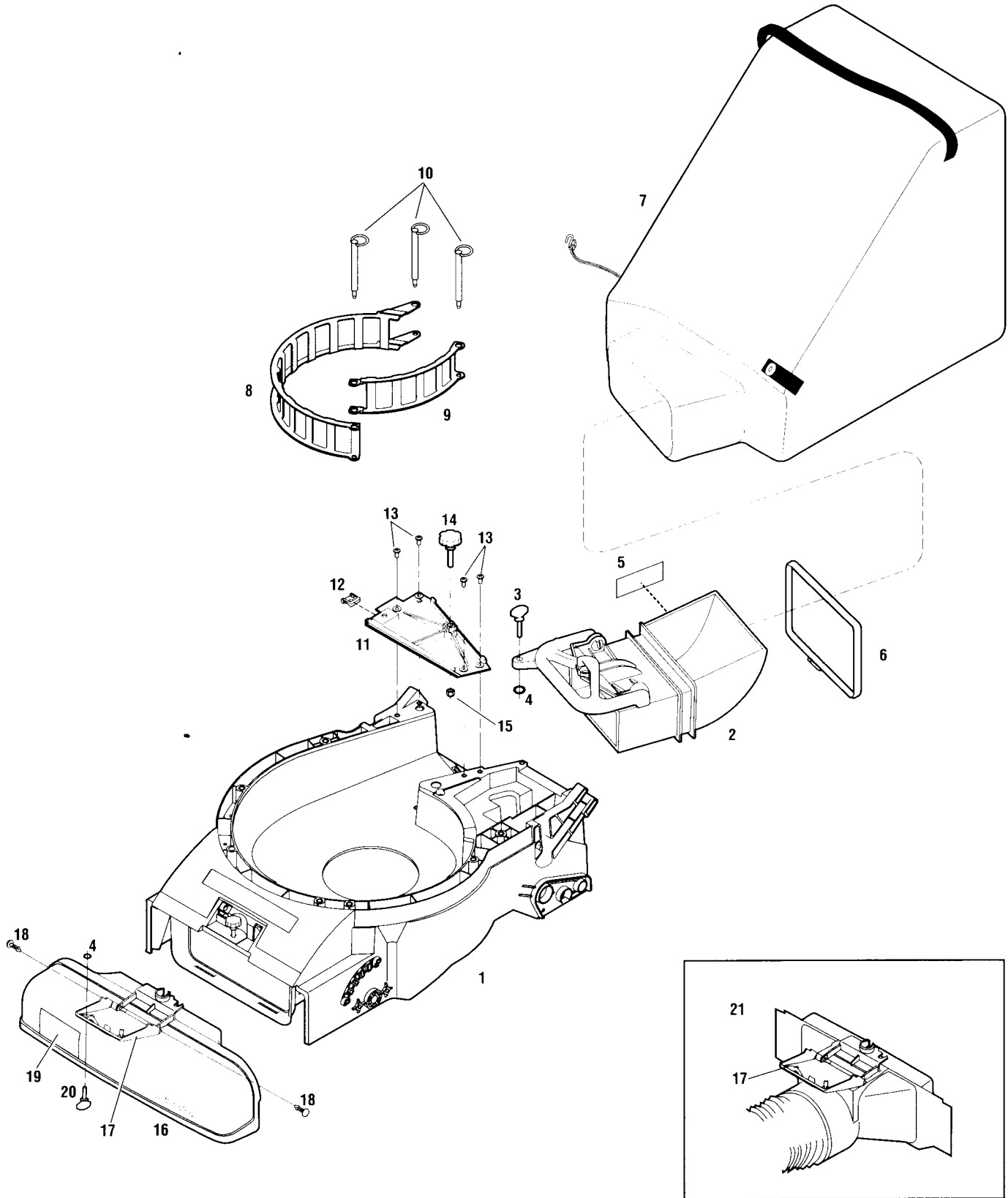
\* As required to obtain correct clearance between chipper blade and anvil - see Owner/Operator Manual.

\*\* See your authorized Briggs & Stratton engine dealer for engine service or parts. Refer to engine nameplate for model/type number.

# TROY-BILT CHIPPER/VAC PLUS

# Models 47291 and 47292

Serial Numbers: 472910100001 - 472910199999  
472920100001 - 472920199999

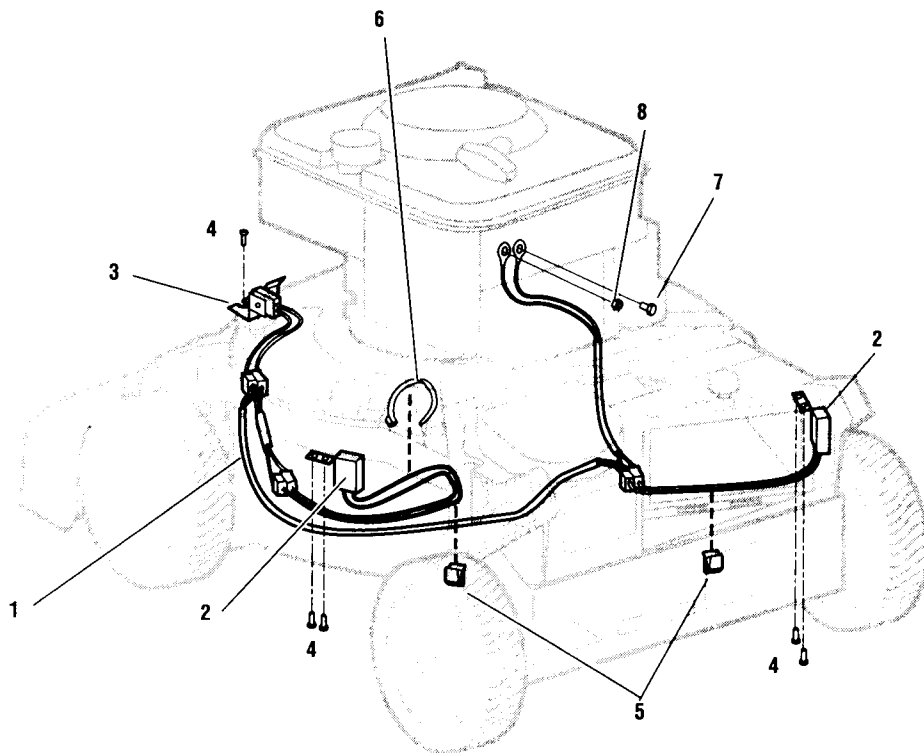


REF No.	PART No.	DESCRIPTION	QTY.
1	---	Housing. For installation only by authorized TROY-BILT service dealer. ....	1
2	1903360	Bag Holder Assembly. Incl. Ref. Nos. 3, 4 and 5.....	1
3	1909387	Fastener - 1/4 Turn.....	1
4	1909260	Clip - Retaining .....	1
5	1902749	Decal - Danger: Rotating Cut. Blades.	1
6	1909364	Bag Holder Clamp .....	1
7	1909161	Collection Bag.....	1
8	1909121001	Screen - Main, Std. ....	1
9	1909050001	Screen - Access, Std.....	1
10	1909068	Pin, Screen .....	3
11	1903338	Discharge Ceiling Incl. Ref. Nos. 12, 14 and 15.....	1

REF No.	PART No.	DESCRIPTION	QTY.
12	1909256	Clip - 1/4 Turn Fastener.....	1
13	1909359	Phillips Screw, 1/4-20 x 1/2 .....	4
14	1909321	Knob, Discharge Ceiling.....	1
15	92016	Hex Locknut, Nylon, 5/16-18 .....	1
16	1909110	Vacuum Head Assembly. Incl. Ref. Nos. 4, 17, 18, 19 and 20 .....	1
17	1903343	Vacuum Head Safety Cover. Incl. Ref. Nos. 4, 18 and 20.....	1
18	1909278	Pin - Clip Key Hole .....	2
19	1902753	Decal: Danger Rotating Cut. Blades ...	1
20	1909386	Fastener - 1/4 Turn.....	1
21	47757	Attachment Hose Kit (Optional) Assembly Required. ....	1

Serial Numbers: 472910100001 - 472910199999  
472920100001 - 472920199999

**SAFETY INTERLOCK WIRING SYSTEM**

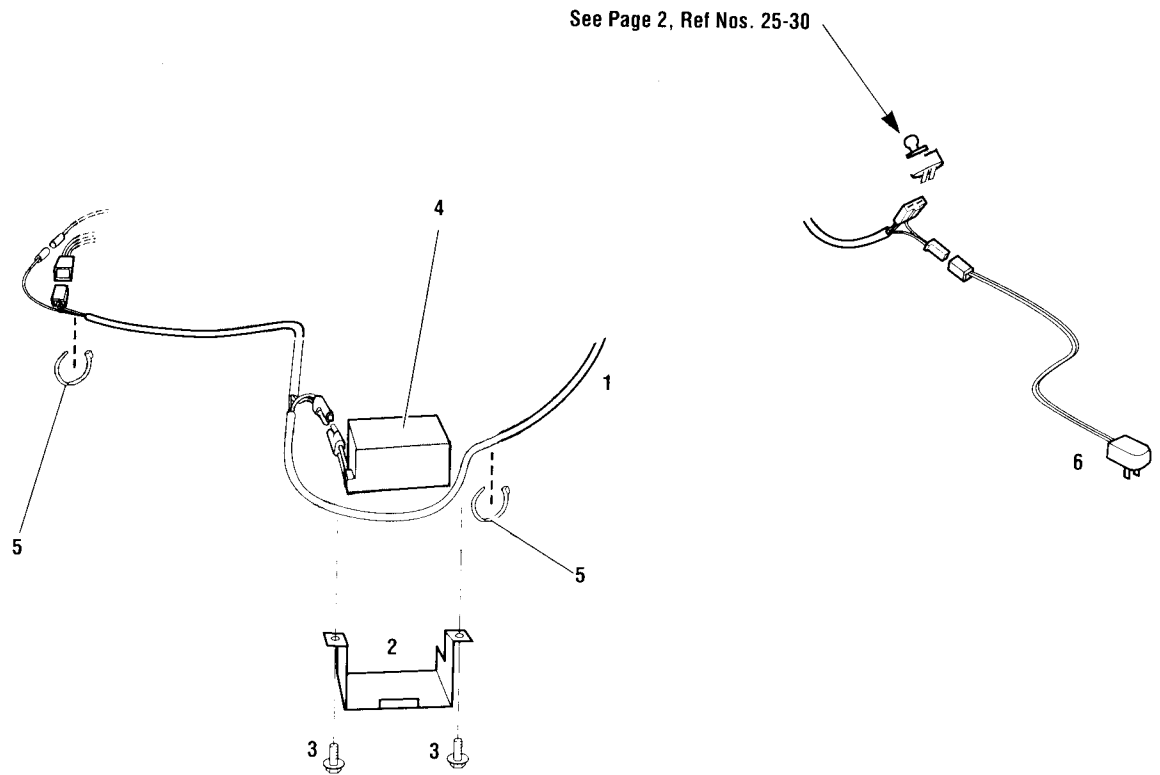


REF No.	PART No.	DESCRIPTION	QTY.
1	1909342	Harness, Safety Interlock Wire .....	1
2	1909200	Interlock Switch w/Bracket, Side and Rear .....	2
3	1909199	Interlock Switch w/Bracket, Front.....	1
4	1909422	Screw, Plastite, #8-16 .....	5

REF No.	PART No.	DESCRIPTION	QTY.
5	9218	Clip, Wire .....	2
6	1763682	Cable Tie.....	1
7	1902137	Hex Hd. Screw, #10-24 x 1/4, Thread Forming .....	1
8	....	Nut, Hex Hd. See Note 1 .....	1

NOTE 1- See your authorized Briggs & Stratton engine dealer for engine service or parts.

**ELECTRIC START COMPONENTS - MODEL 47292**  
(Also See Page 2)



REF No.	PART No.	DESCRIPTION	QTY.	REF No.	PART No.	DESCRIPTION	QTY.
1	1909363	Wire Harness - Electric Start.....	1	4	1756550	Battery .....	1
2	1909345001	Battery Bracket.....	1	5	1763682	Cable Tie .....	2
3	9550	Hex Hd. Screw, 5/16-18 x 1/2 .....	2	6	1768449	Battery Charger .....	1



***For customer assistance, contact your nearest authorized dealer or:***

In the U.S.A.: **GARDEN WAY INCORPORATED** • 102nd St. & 9th Ave. • Troy, New York 12180  
For Technical Service: (800) 520-5520 • For Parts: (800) 648-6776

In Canada: **GARDEN WAY INCORPORATED** • 320 Van Sickle Rd., Unit 12 • St. Catharines, Ontario L2R 6P7  
For Technical Service or Parts: (800) 225-3585